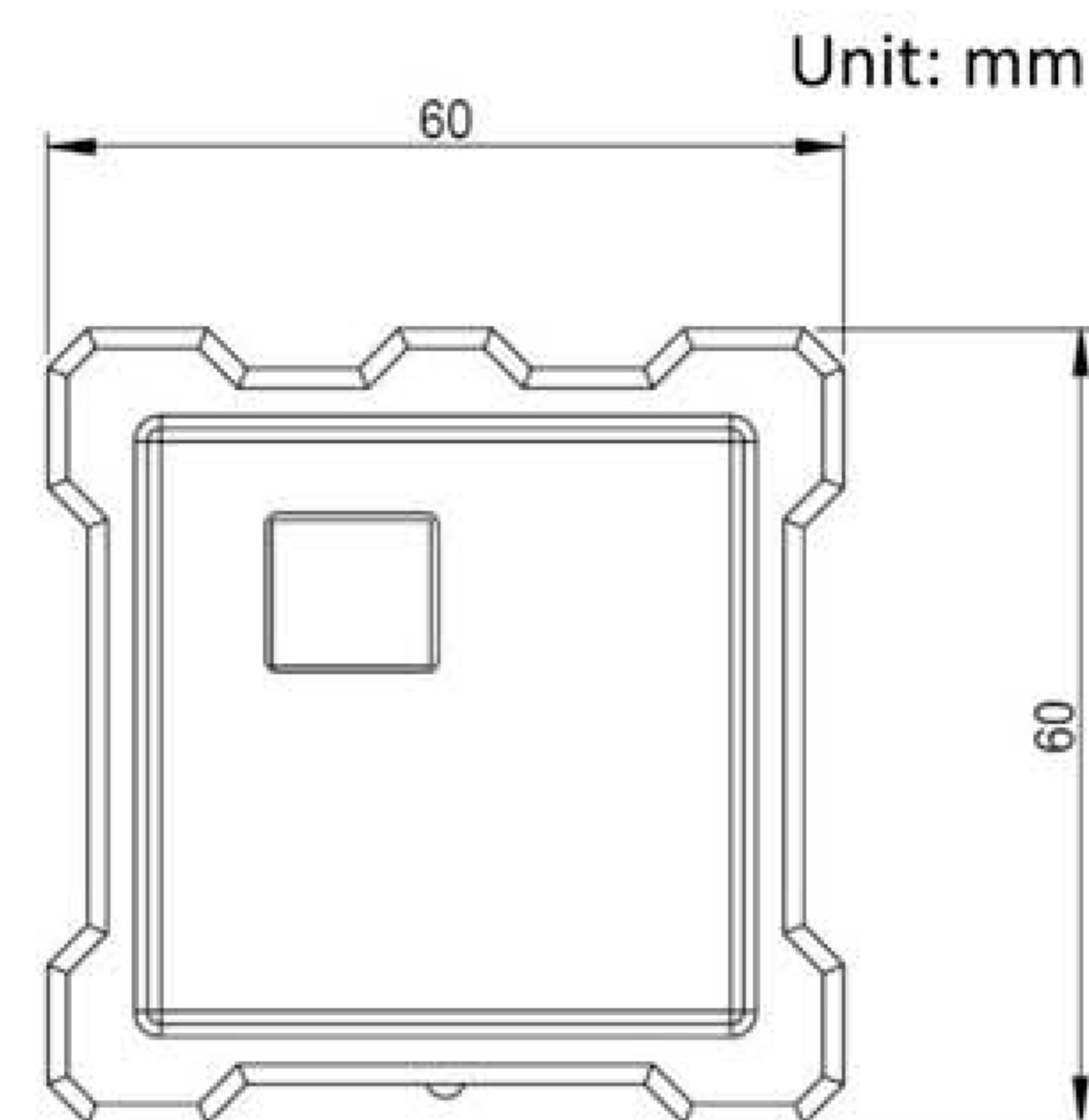
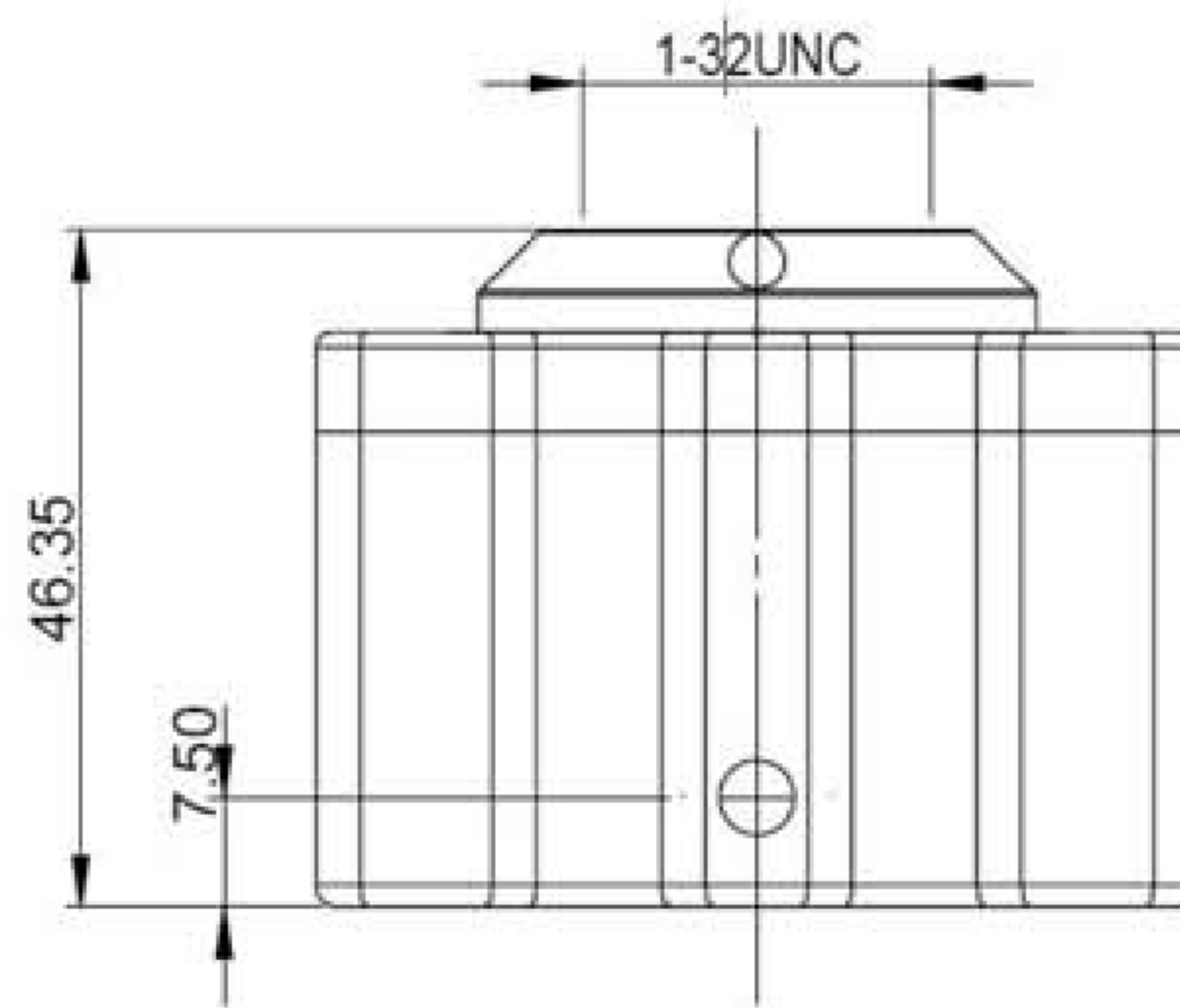


# USB 2.0 Camera Series

## NAHWOO Digital Camera Specification

Model	MCX310	MCX1200	MDX1500	MCX2000
CCD sensor	1/2" SONY ICX205	2/3" SONY ICX285	Kodak KAI-4022	2/3" SONY ICX282
Scan mode	Progressive scan	Progressive scan	Progressive scan	Progressive scan
Sensor resolution	2048x1536	1360 x 1024	2048 x 2048	2592 x 1944
Pixel size	3.2µm x 3.2µm	6.45µm x 6.45µm	7.4µm x 7.4µm	3.45µm x 3.45µm
Color/ Mono	color	color	color	color
A/ D conversion	10bit	12bit	12bit	12bit
Dynamic range	43 dB	41 dB	72 dB	36 dB
Exposure time	6 ms – 650 ms	0.5 ms – 40 mins.	0 – 20 mins.	1.6 ms – 17.9 mins.
Analog gain			6 – 40 dB	
Max. frame rate	7.5 fps@ 1360 x 1024	12.5fps@ 1360x1024	8fps@2048x2048	7.8fps@ 1280x980
Max. Resolution	2048x1536		2048x2048	
Read out noise	12 e-	8 e-	6 e-	7 e-
Optical interface	C/ CS mount			
Cooling	no	optional	optional	no
IR cut-off filter	integrated in C-mount			
Voltage supply	USB 2.0 powered			
Power consumption	approx. 2W	approx. 2W	approx. 2W	approx.2W
Ambient condition	-30°C ~ 70°C			
Storage condition	-30°C ~ 70°C			
Dimensions	60mm X 60mm X 46mm	60mm X 60mm X 46mm	105 x 79 x 50 mm	105 x 79 x 50 mm
Weight	Approx. 240g	Approx. 240g	Approx. 400g	Approx. 400g
Software	iWorks Viewer 1.0			
SDK	available			

### Product Dimensions



**NAHWOO**  
trading